

All rights reserved by Kelsey Design Associates
 No part of this publication may be reproduced, stored in a retrieval system or transmitted in any form or by any means without the prior permission of Kelsey Design Associates
 Do not make or derive any dimensions to be checked on site and any discrepancies reported to Kelsey Design Associates
 Architecture - Interior Design - Master Planning - Project Management

SVP DRAINAGE TO M&E CONSULTANTS DETAILS

IT IS IMPERATIVE THAT FOR 182 MET FRAME STRUCTURAL WALLS WITH ONE RESILIENT BAR, THE BAR IS FIXED TO THE SIDES AS INDICATED ON THESE DRAWINGS IN ORDER TO ENSURE INTERNAL PLASTER TO PLASTER DIMENSIONS OF ROOMS ARE MAINTAINED, STUDY BEDROOMS MIN. 2.650

ROOM ARRANGEMENT INDICATIVE ONLY - REFER TO KDA ROOM LAYOUT DRAWINGS FOR ALL ROOM LAYOUT DETAILS

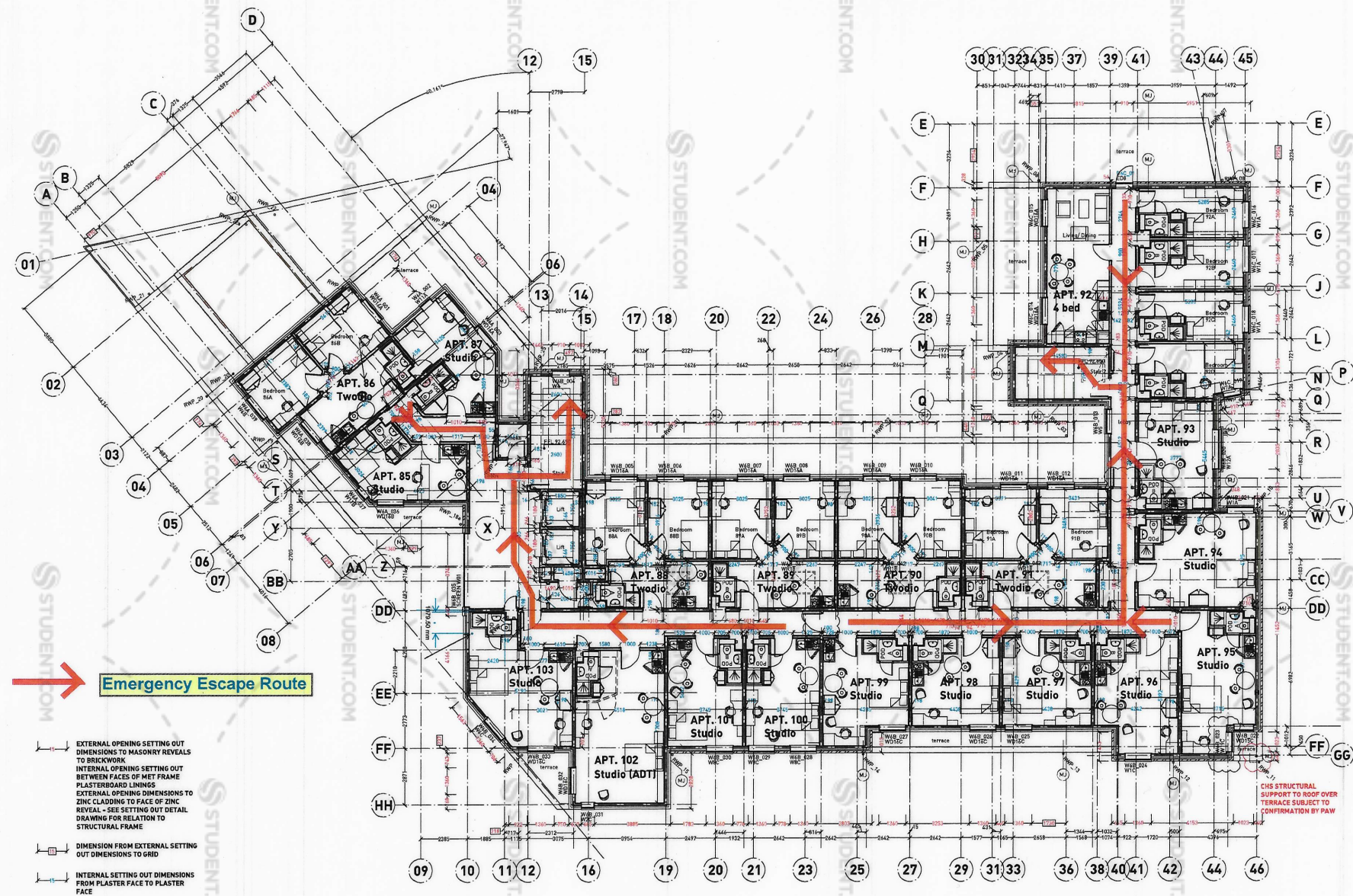
CURRENT REVISION INDICATED BY CLOUD

- Revision - Date
 Rev A - 28/09/13
 Internal Structural Opening Setting Out dimensions added, key to dimensions added. Grid 17 corrected 100mm towards grid 18. Note regarding resilient bar in wall added.
 Rev B - 02/10/13
 Issued for construction. Staircase 1 new wall and associated gridline P moved by 552mm to enable staircase walls to align as requested by PAW. Central fire door indicated to coordinate with M&E consultants requirements. Grid Line CC position revised such that wall on grid line between grids 17 & 18 is structural Met Frame. Also wall between Apt 64 and Apt 65 corridor revised to be structural Met Frame. All as requested by PAW. Dry riser added to Stair 2.
 Rev C - 08/10/13
 The columns added, lift openings added, room numbers amended to have letter reference, mobility and ADT (accessible) rooms amended as instructed, finish floor levels added, M&E consultant cladding replacing brickwork to terrace roof beds as instructed, rainwater downpipes added, movement joints added.
 Rev D - 11/11/13
 Narrow pod rear doors revised to 700mm & external fire enclosure removed as instructed by contractor, position of fire landing window to stair 1 & mg25 revised, dry riser outside box dims indicated, balcony reference service riser door on G1, lift pod rear door on G1, DD 44-46 all added.
 Rev E - 02/11/13
 Apartment numbers revised.
 Rev F - 08/11/13
 Right-hand references and locations added to Apartment numbers 88-95 amended joint locations along gridline 46 revised as requested by B.Eng.
 Rev G - 20/01/14
 Block B cross corridor walls revised to 100mm thick. Window referencing added.
 Rev H - 10/02/14
 Block B cross corridor walls revised to 100mm thick. Window referencing added. Rev I - 10/02/14
 Kitchen & ensuite layouts indicated, additional plaster face dims added to ALB partitions, window W08_023 type revised.

- M1 Movement joint position
 Wall sea to movement joints to B.Eng details
 PAW to approve all movement joint locations



project no: 12/03
 project title: Impact 2
 location: Edward Street SHEFFIELD
 drawing no: 009
 drawing title: LEVEL 6 PLAN
 revision: H
 date: Sept 2013
 drawn by: 1:100 @ A1
 approved by:
 scale:
 drawing status: FOR CONSTRUCTION



Emergency Escape Route

- EXTERNAL OPENING SETTING OUT DIMENSIONS TO MASONRY REVEALS TO BRICKWORK
- INTERNAL OPENING SETTING OUT BETWEEN FACES OF MET FRAME PLASTERBOARD LININGS
- EXTERNAL OPENING DIMENSIONS TO ZINC CLADDING TO FACE OF ZINC REVEAL - SEE SETTING OUT DETAIL DRAWING FOR RELATION TO STRUCTURAL FRAME
- DIMENSION FROM EXTERNAL SETTING OUT DIMENSIONS TO GRID
- INTERNAL SETTING OUT DIMENSIONS FROM PLASTER FACE TO PLASTER FACE

CHS STRUCTURAL SUPPORT TO ROOF OVER TERRACE SUBJECT TO CONFIRMATION BY PAW